

**630S1-xx** Single Line Switched  
**630S2-xx** Dual Line Switched

**630S1-12-xx** Single Line Switched with Auxilairy Jack  
**630S2-12-xx** Dual Line Switched with Auxilairy Jack

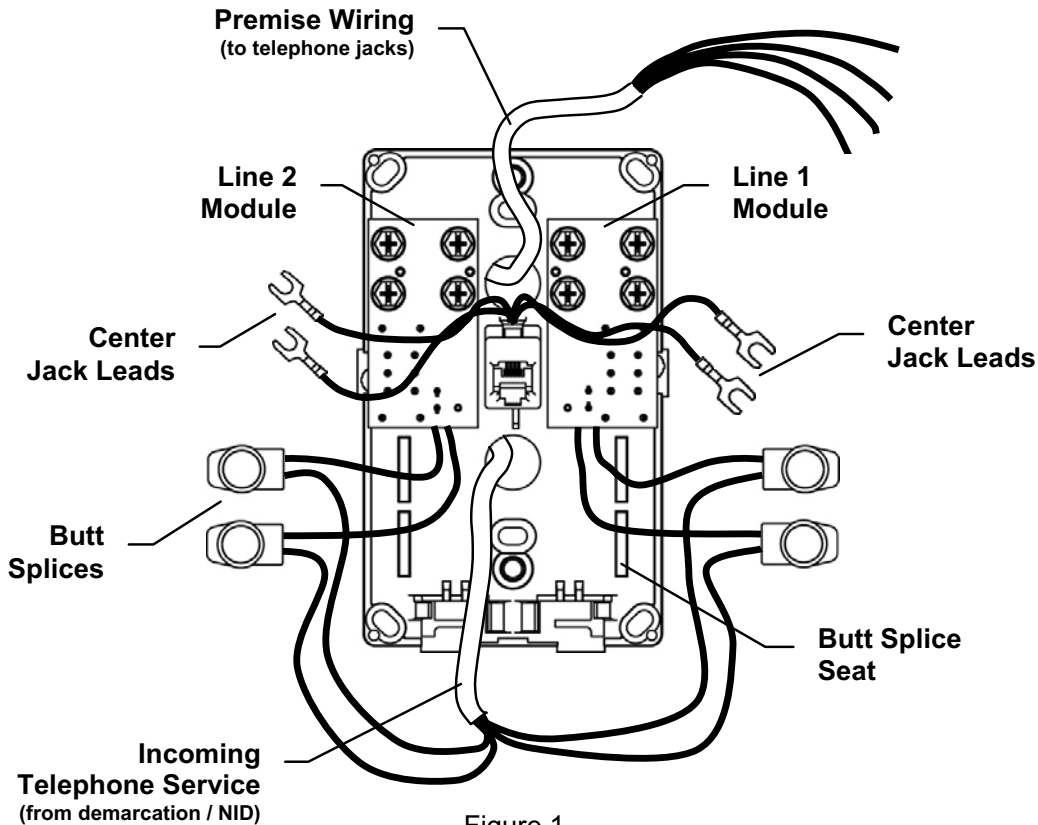


Figure 1

### Instructions:

- **This Dual Provider Wall Mount Phone Jack must be terminated as the first jack in series after the incumbent's demarcation point / NID.** (Any connections made prior to this jack will not be controlled by the switch).
  - **It is highly recommended that you temporarily disconnect the incumbent telephone service line at the demarcation point before installing this device.**
  - **See reverse side for alternate wiring configurations.**
1. Remove existing wall mount phone jack.
  2. Identify the incumbent telephone service line bringing the existing telephone service to the premise.
  3. Cut the incoming telephone service line and remove the outer jacket leaving the insulated wires. The wires for line one are typically red and green (occasionally blue and white/blue). The wires for line two are typically yellow and black (occasionally orange and white/orange).

4. Mount the Dual Provider Wall Mount Phone Jack to the wall using the provided screws, route the incoming service line and premise wiring through the base as shown in figure 1.
5. Using the butt splices provided, connect the incoming telephone service wires to the blunt leads at the bottom of each service line module. (figure 1)
6. Secure terminated butt splices under the butt splice seats and route excess wire back into the wall. (figure 1)
7. Terminate the premise wiring to the screws at the top of each service line module. Route excess wire back into the wall. (figure 2)
8. Secure Dual Provider Wall Mount Phone Jack cover using provided screw lugs.
9. Re-connect the incumbent telephone service line back in at the demarcation point and set the switch to the proper position (Company B for EMTA or Company A for incumbent). Check to see that the telephone is working properly.

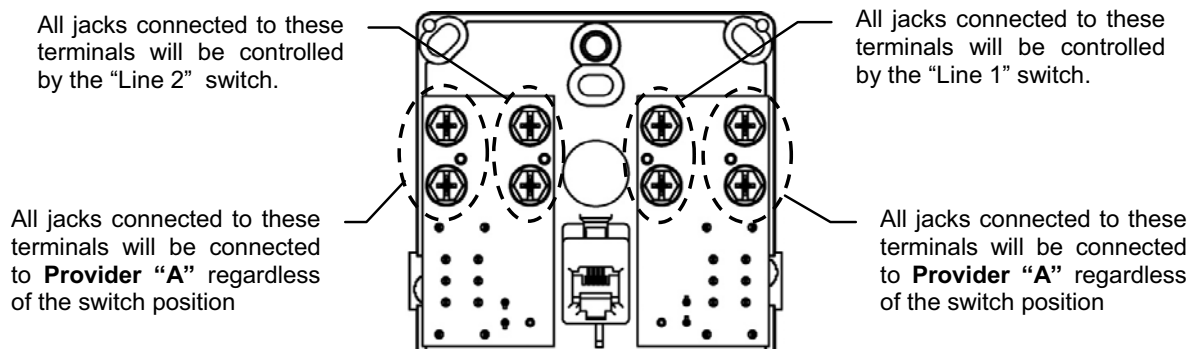


Figure 2

### Alternate Wiring Instructions:

- All Dual Provider Wall Mount Phone Jacks are supplied with the center jack pre-wired to the switched terminals (center jack will be controlled by the switch).
  - The auxiliary jack, if present, will be pre-wired to the "Provider A" screw terminals (auxiliary jack will NOT be controlled by the switch).
  - To fit specific application needs, both the center jack and auxiliary jack may be re-wired to either set of screw terminals. (figure 2)
1. Loosen screws to release wire terminals from their pre-wired positions.
  2. Place wire terminals from center or auxiliary jack under desired screw terminals and tighten screws. (Center and auxiliary jacks are wired as follows; Green-T1, Red-R1, Black-T2, and Yellow-R2). (figure 2)

**SUTTLE**

1001 East Hwy 212  
Hector, MN 55342  
www.suttleonline.com

Toll Free: 1-800-852-8662  
Local: 1-320-848-6711  
Fax: 320-848-6218