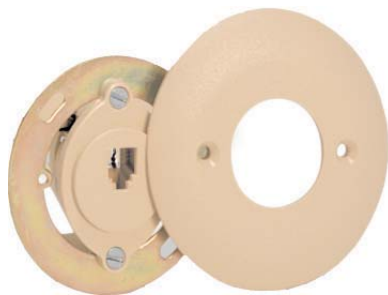


# SUTTLE

## Traditional Telco

### 625B2 Jack Assembly



#### Product Description:

The 625B2 Modular Telephone Jack Assembly consists of an 625F or 625FE Modular Jack with a 16A Face Plate. The 625B2 assembly is a complete installation package for flush mounting a modular telephone outlet in prewired installations utilizing the 63A junction box. The 625B2 Modular Jack Assembly is compatible with modular four-conductor, plug-ended line cords and available in 4-wire configurations only.



#### Features:

- \* Mounted with brackets or directly to the wall
- \* Available in 4-conductor configurations only
- \* USOC wiring
- \* Meets or exceeds FCC Part 68 rules and regulations and UL 1863

#### Product Specifications:

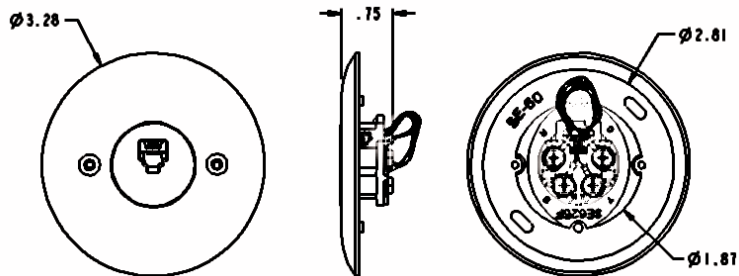
Wiring:	USOC
Insertion Life:	1000 insertions
Housing:	UL 94V-0 rated
Contacts:	50 $\mu$ gold plated
Connection:	Screw terminals

#### Electrical Specifications:

Contact Pressure:	100 grams minimum
Insulation Resistance:	500 megaohms minimum
Contact Resistance:	100 milliohms maximum
Voltage/Current:	140 VDC @ 2.2 amps maximum
Dielectric Withstand:	1000 VAC, RMS, 60 Hz, 1 minute

#### Ordering Information:

Part Number:	625B2-4-50
Item Description:	4-conductor, screw terminals, 16A faceplate, with bracket, USOC wiring
Colors:	Ivory = (50)
Packaging:	1 unit per bag/20 bags per carton



Specifications subject to change without notice. Copyright 2004. Original: 7/04

1001 East Hwy 212  
Hector, MN 55342  
www.suttleonline.com

**Get Connected**

Toll Free: 1-800-852-8662  
Local: 1-320-848-6711  
Fax: 320-848-2361